

# Bluebeam PDF Revu 9 Installation Guide

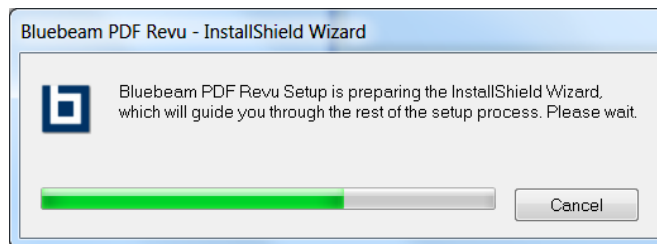
## Windows 7

Thank you for choosing Bluebeam PDF Revu 9! This tutorial will show you how to install Revu on your Windows operating system. While this tutorial is conducted on Windows 7, XP and Vista systems can follow the same instructions with only minor changes.

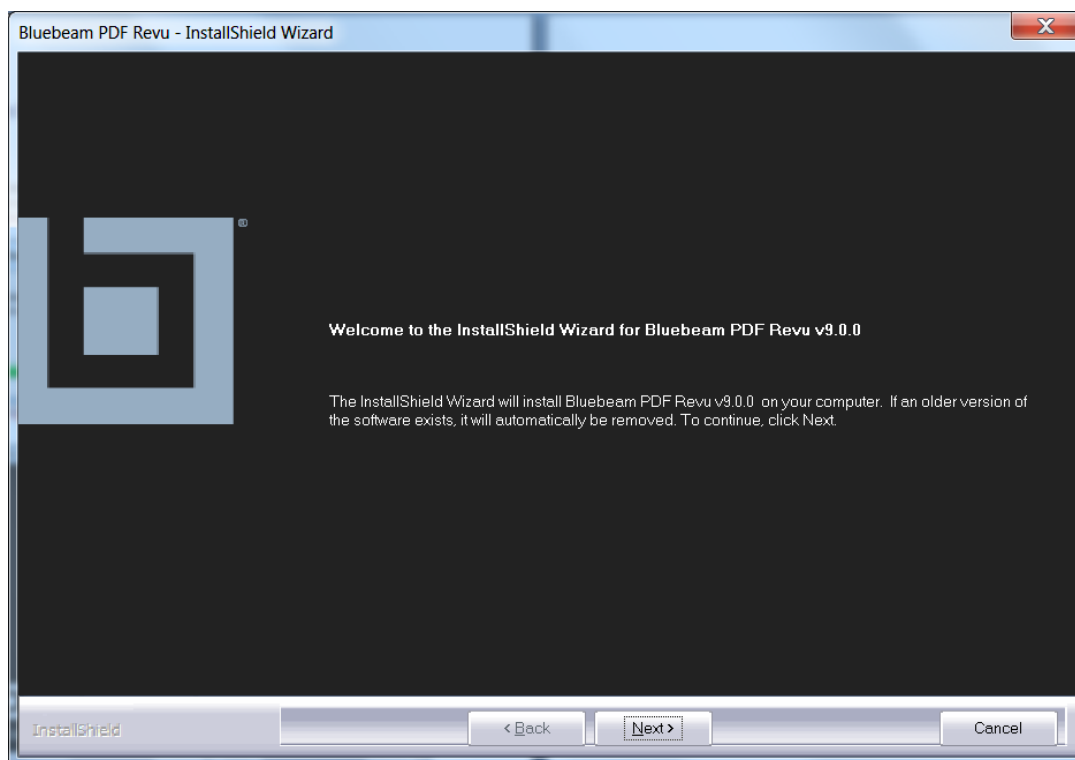
Please note that these instructions assume you have already downloaded the installation file for Bluebeam PDF Revu. If you have not, please go to [Bluebeam.com/updates](http://Bluebeam.com/updates).



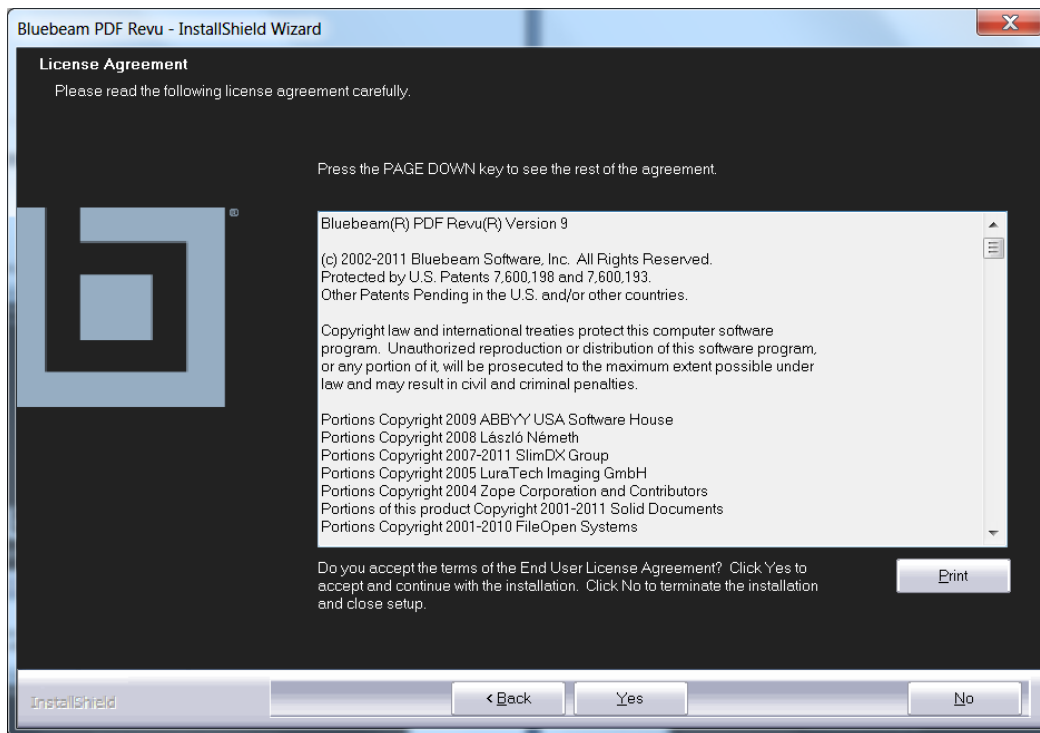
The InstallShield Wizard will begin once you double-click on the Bluebeam PDF Revu install file.



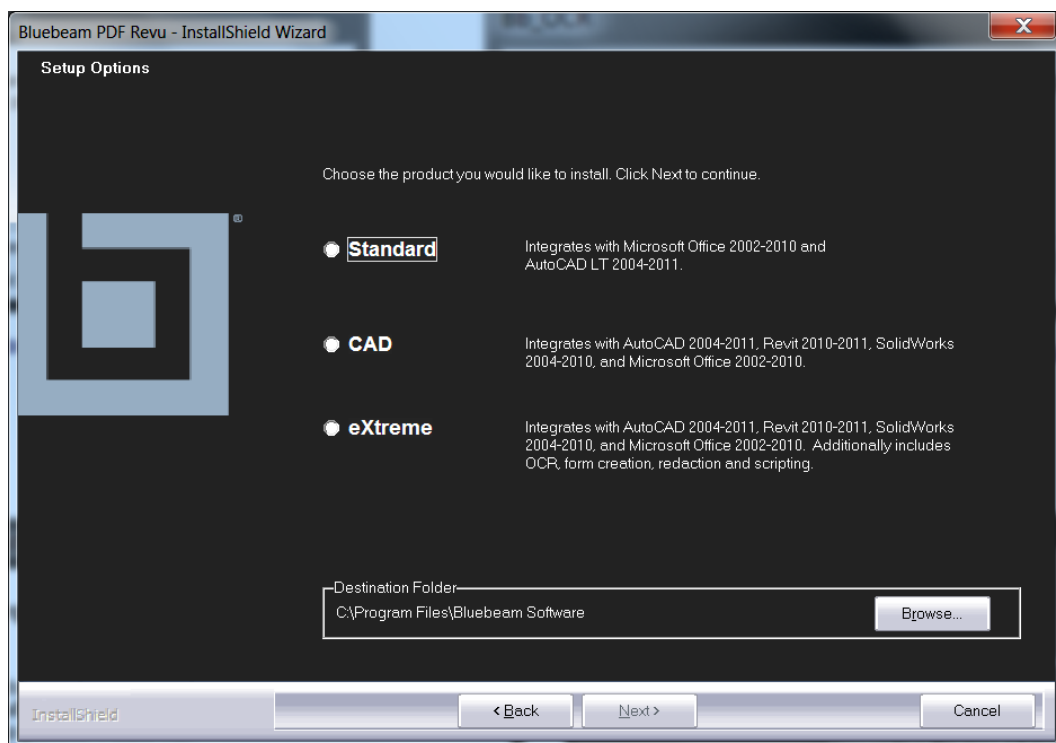
Click **Next** on the InstallShield Welcome screen.



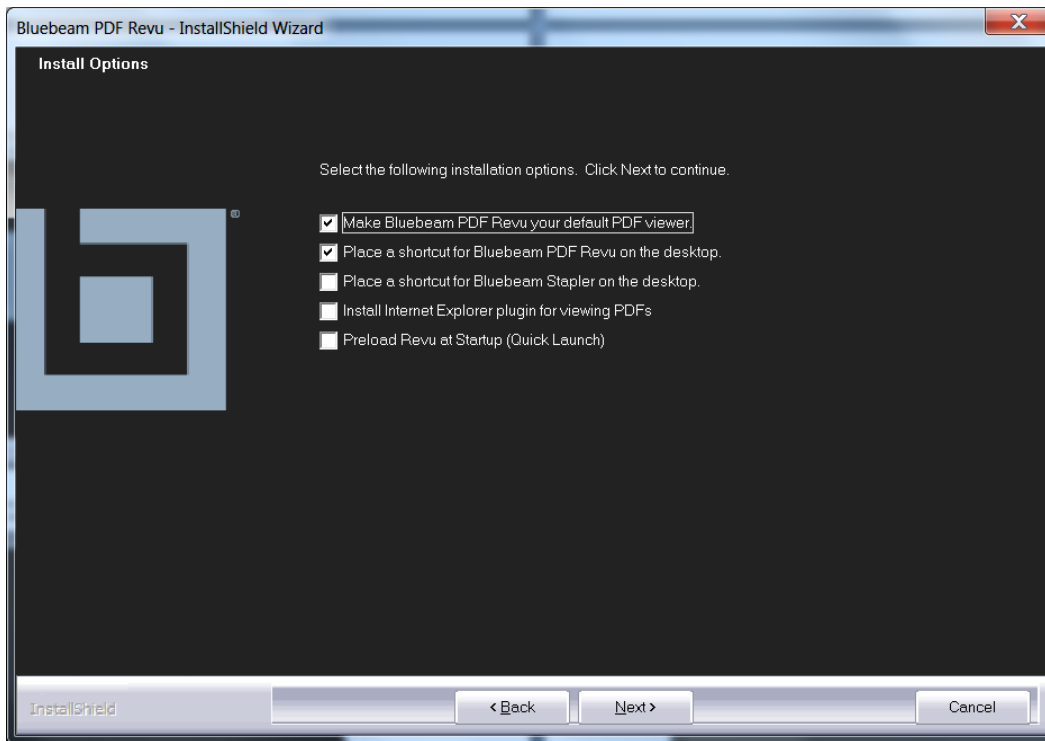
Please read the License Agreement carefully and click **Yes** when you agree to accept.



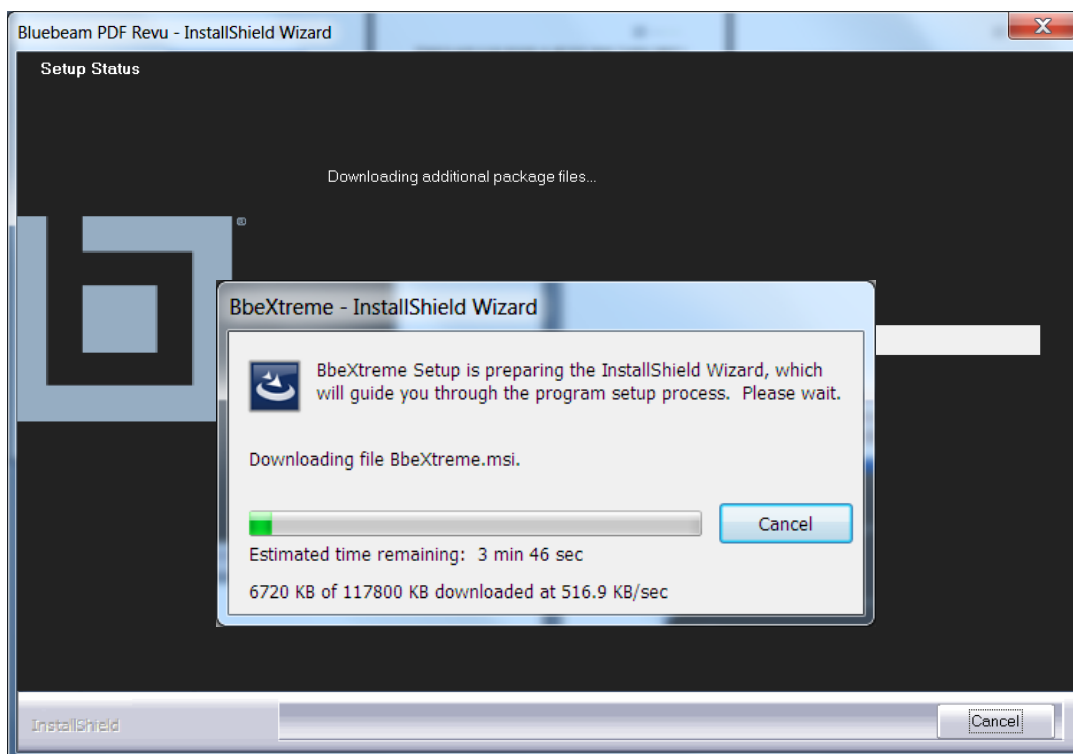
Choose the product to install and select the destination location. The default location is **C:\Program Files\Bluebeam Software**. Click **Next** after your configuration has been selected.



Select your Installation options and click **Next**.



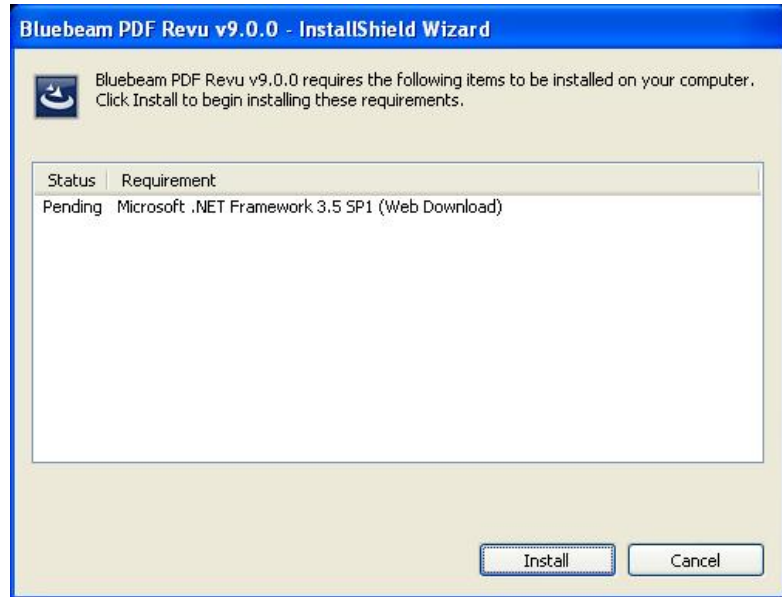
If you are installing *Revu eXtreme*, the InstallShield Wizard will now download the necessary product components.



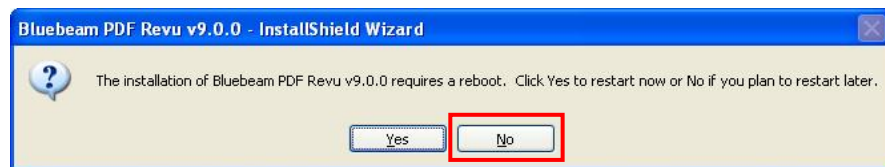
**Note for XP and Vista users:**

Workstations that do not have Microsoft .NET Framework 3.5 SP1 installed will be prompted to download and install it.

Because of variations in connection speed and prerequisites, please allow ample time for this portion of installation to complete

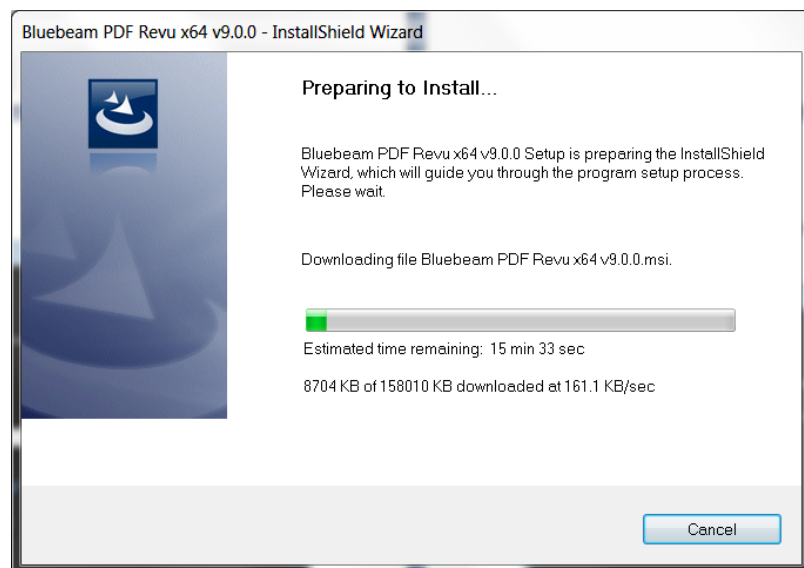


If you are prompted to reboot your computer, please select **No**, and restart your computer once installation is finished.

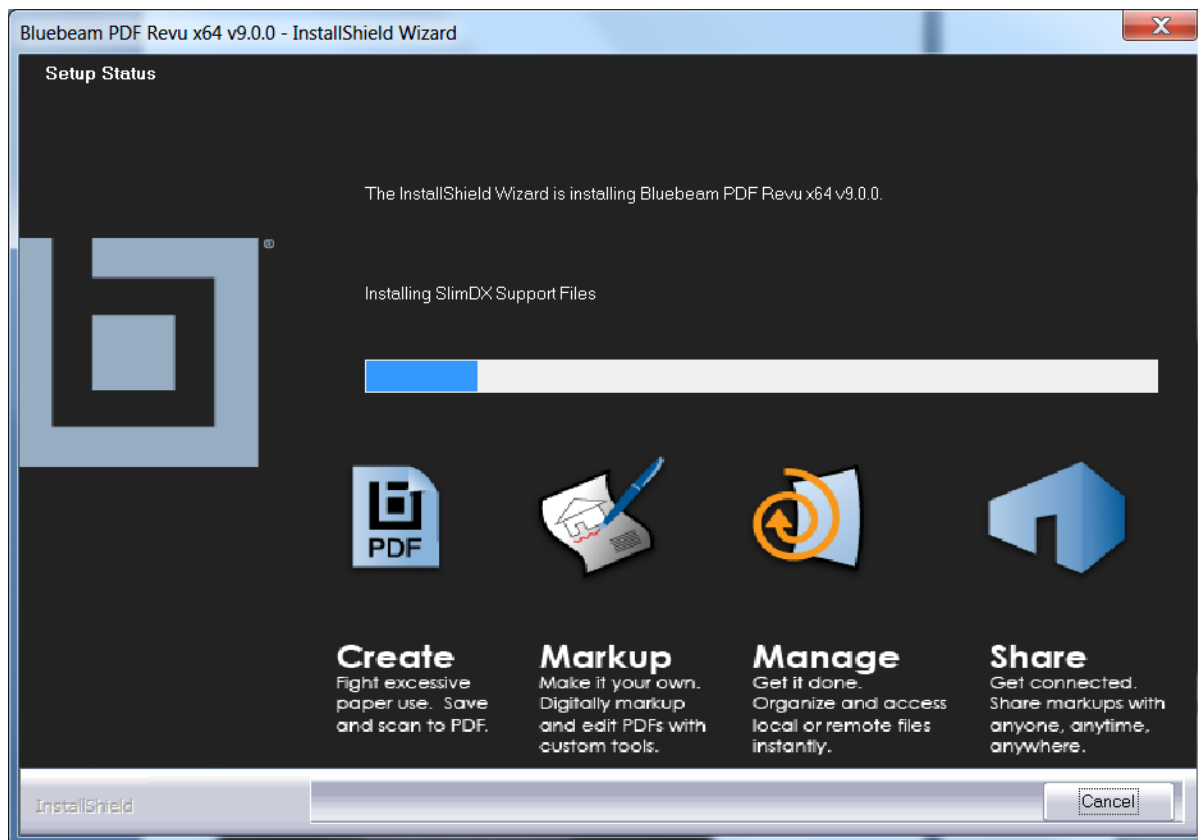


Revu will now continue the download and install all other files needed for installation.

Please allow time for Revu 9 to download all necessary components.

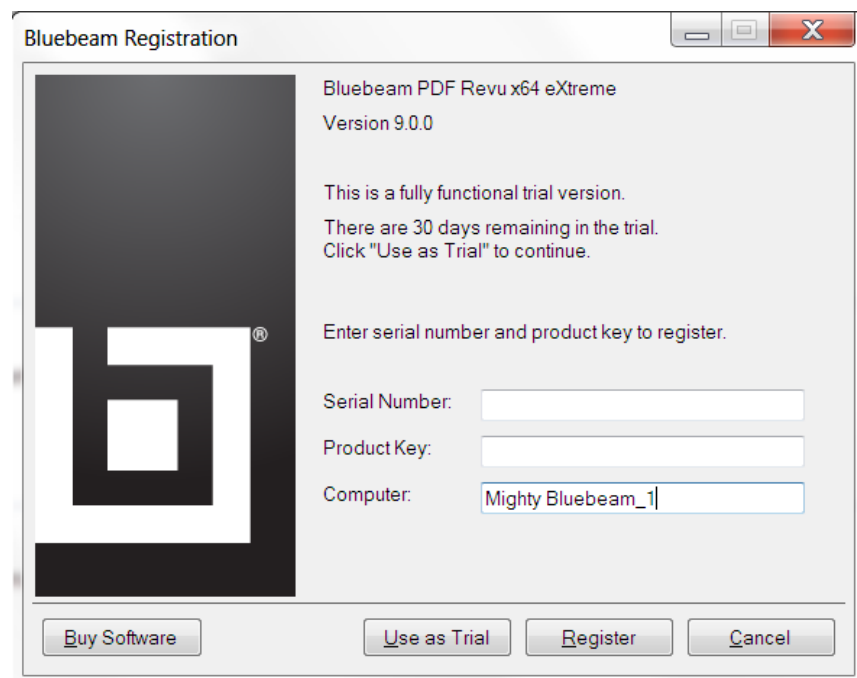


Installation will continue once downloads have been completed

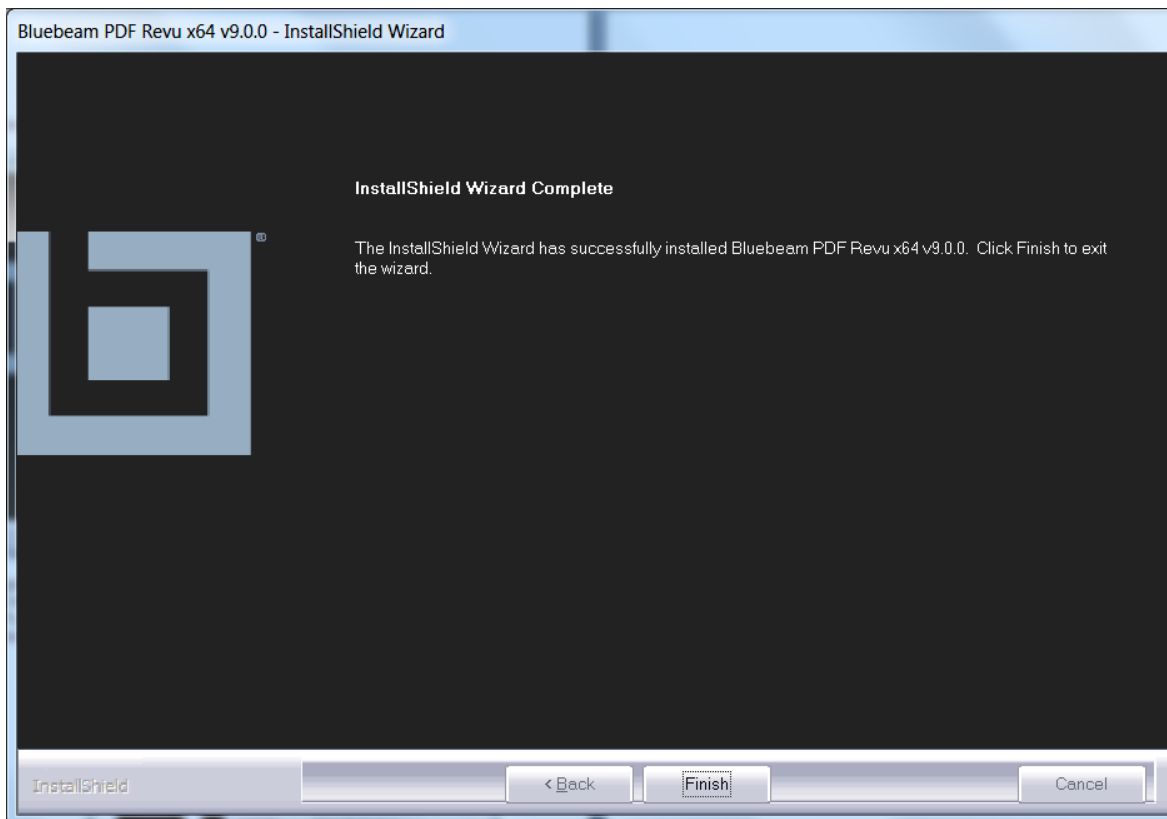


Enter your registration information or select **Use as Trial** if you have not yet purchased a license.

You may also select **Cancel** to skip Registration and activate the trial.



The installation process will continue and once completed, select **Finish**.



Remember to reboot your system if you were prompted earlier after installing the Microsoft .NET Framework 3.5 SP1 on Windows XP or Vista.

### ***Installation issues***

For further assistance with installation, please contact Bluebeam Support at [Support@bluebeam.com](mailto:Support@bluebeam.com) for any issues that are experienced.