

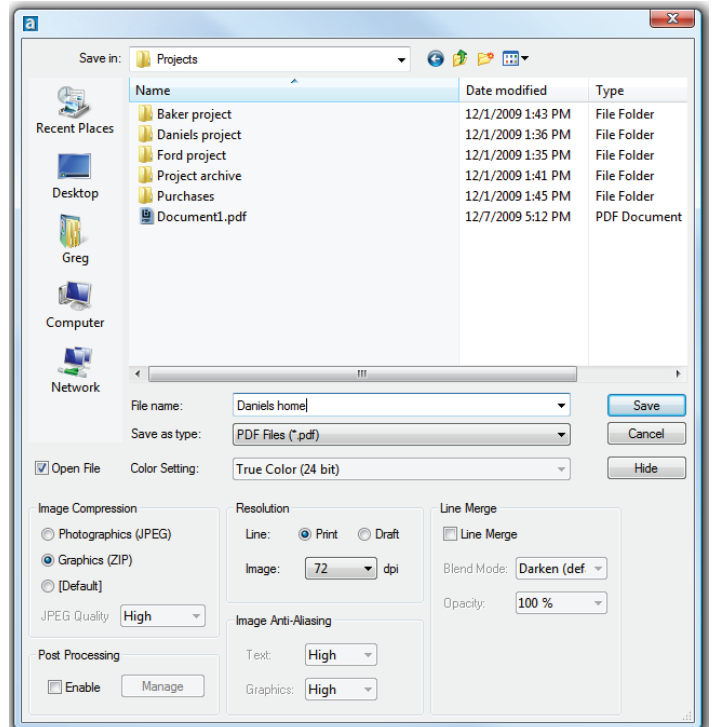
Bluebeam® Revu® Plugin Feature List

Note:

- ** All features listed below are compatible with AutoCAD, Revit and Solidworks unless otherwise stated.
- ** AutoCAD®, Revit®, Navisworks® Manage, Navisworks® Simulate, and SolidWorks plugins are only available in Bluebeam Revu CAD and eXtreme™.

File Conversion Features

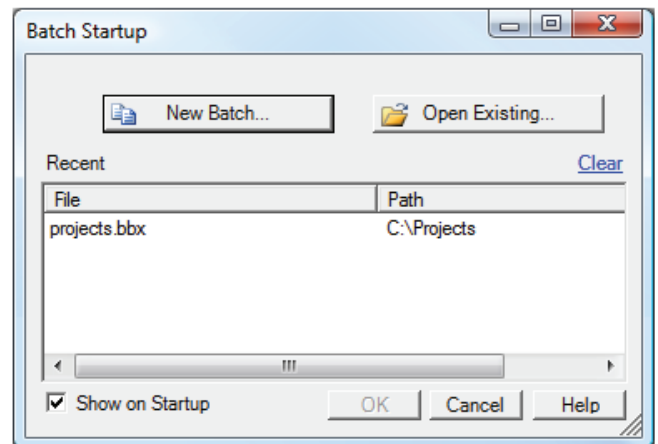
- Adds Bluebeam buttons into AutoCAD, Revit, Navisworks Manage, Navisworks Simulate and SolidWorks toolbars
- Converts DWG, Revit, SolidWorks, and Windows files to PDF, TIF, JPG, GIF, BMP, PSD, PNG, EMP, WMF, and PCL
- Create DWF files from AutoCAD
- Creates PDF files from command line in AutoCAD 2011
- Adds Bluebeam buttons into AutoCAD LT toolbar (2004 – 2013)
- Adds Bluebeam buttons into MS Word, Excel, Outlook and PowerPoint toolbars
- Integrates with Microsoft Office XP, 2003, 2007 and 2010
- Integrates with Microsoft Outlook 2003, 2007 and 2010
- Installs Bluebeam PDF printer driver to create PDF, TIF, JPG, GIF, BMP, PSD, PNG, EMP, WMF, and PCL files from:
 - Any Windows application
 - Any CAD application
 - HTML pages
- Bluebeam PDF printer driver automatically recognizes which application it is converting from and has predefined settings for most major CAD applications for optimal PDF output. Predefined PDF settings exist for:
 - AutoCAD
 - Autodesk Inventor
 - Revit
 - SolidWorks
 - MicroStation®
 - Pro/Engineer®
 - Unigraphics®
 - Microsoft Word
 - Microsoft Excel
 - Microsoft PowerPoint
 - Navisworks® Manage
 - Navisworks® Simulate
 - Microsoft Outlook



- Bluebeam Revu CAD supports line merge in PDF files created from AutoCAD and Revit
- Converts true type text to PDF files
- Enables easy Postscript to PDF processing
- Converts images to PDF and PDF to images with built-in image converter

Batch Conversion Capability in AutoCAD

- Batch converts DWG to PDF, DWF, TIF, JPG, GIF, BMP, PSD, PNG, EMF, WMF, and PCL files from AutoCAD
- Simplifies batch PDF creation process with built-in batch wizard
- Will use default page setup, a custom PDF configuration, or a global definition for all file conversions
- Creates single or multi-page PDF files
- Provides the following options for creating batch files:
 - One PDF per CAD drawing
 - All drawings combined into one batch file
 - Layout/sheet control
- Creates, saves, and edits batch lists
- PDFs can include:
 - Last active layout
 - All Layouts
 - Individually named layouts
 - Model
 - Currently active layout
- Page setups created in AutoCAD can be imported into the Bluebeam Page Setup dialog
- Multi-select functionality available within:
 - Page Setup
 - Layouts
 - Advanced settings
- Drag and drop support within the Batch interface and also file drag support
- Sheet set (DST) support
 - Open a sheet set in Batch Wizard
 - Add all files in a sheet set to a Plot (PDF) file
 - Drag and drop a sheet set file onto the Batch window
- Import DSD (Publish) files
- Adds customized stamps per drawing in addition to Global stamps



Batch Conversion Capability in SolidWorks

- Batch converts SolidWorks to PDF, TIF, JPG, GIF, BMP, PSD, PNG, EMF, WMF, and PCL files
 - Simplifies batch PDF creation process with built-in batch wizard
 - Batch uses the default page setup, a custom PDF configuration, or a global definition for all page sizes
 - Creates single or multi-page PDF files
 - Provides the following options for creating batch files:
 - One PDF per CAD drawing
 - All drawings combined into one batch file
 - Sheet control
 - Creates, saves, and edits batch lists
 - Option to select:
 - Current sheet
 - All sheets
 - All sheets by name
 - Adds customized stamps to files in a batch
-

Bluebeam Stapler (PDF batch and binding for MS Office and Windows)

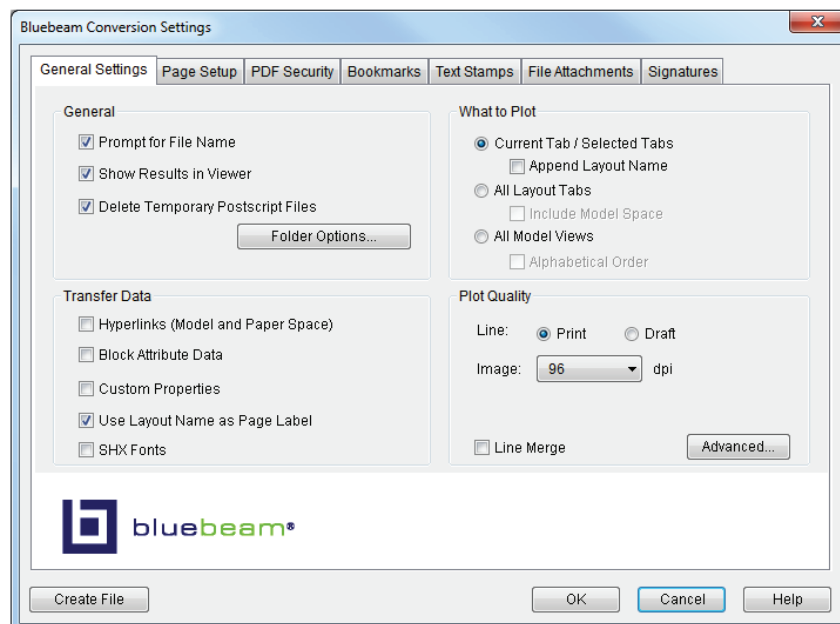
- Creates PDF booklets
- Creates a single PDF file from multiple PDFs, CAD drawings or Windows files
- Natively supports Word, Excel, PowerPoint, and all image types
- Provides a drag-and-drop window that allows users to rapidly convert multiple native files to the ten formats Bluebeam Revu supports
- Saves converted files to a designated folder (you can use the Bluebeam Stapler tool to batch convert files to PDF, or any other file format we support)

General Settings Options for AutoCAD

- General settings options for AutoCAD include:
 - Prompt for Filename
 - Show Results in Viewer
 - Delete Temporary Postscript Files
 - Folder Options to configure default output folder selection
- What to Plot options from AutoCAD include:
 - Current Tab
 - All Layout Tabs
 - All Model Views
- Select the data you want to transfer from AutoCAD files including:
 - Hyperlinks from Model Space and Paper Space
 - Block Attribute Data
 - Custom Properties
 - Use Layout Name as Page Label
 - SHX Fonts into searchable text in PDFs
- Determine Plot Quality by selecting:
 - Print or Draft line
 - Image DPI
 - Line Merge
 - Advanced settings including file format type, anti-aliasing, image compression, resolution, and line merge.

General Settings Options for Revit

- General settings options for Revit include:
 - Prompt for Filename
 - Show Results in Viewer
 - Delete Temporary Postscript Files
 - One File per Page
 - Folder Options to configure
 - Default output folder selection
- What to Plot options from Revit:
 - Current View/Sheet
 - All Sheets
 - Selected Views/Sheet
- Select the data you want to transfer from Revit files including:
 - Hyperlinks
 - File Properties
 - Sheet Properties
 - Use Layout Name as Page Label
- Determine Plot Quality by selecting:
 - Print or Draft line
 - Image DPI
 - Reduce 3D content DPI
 - Line Merge
 - Advanced settings including file format type, anti-aliasing, image compression, resolution, and line merge.



General Settings Options for Solidworks

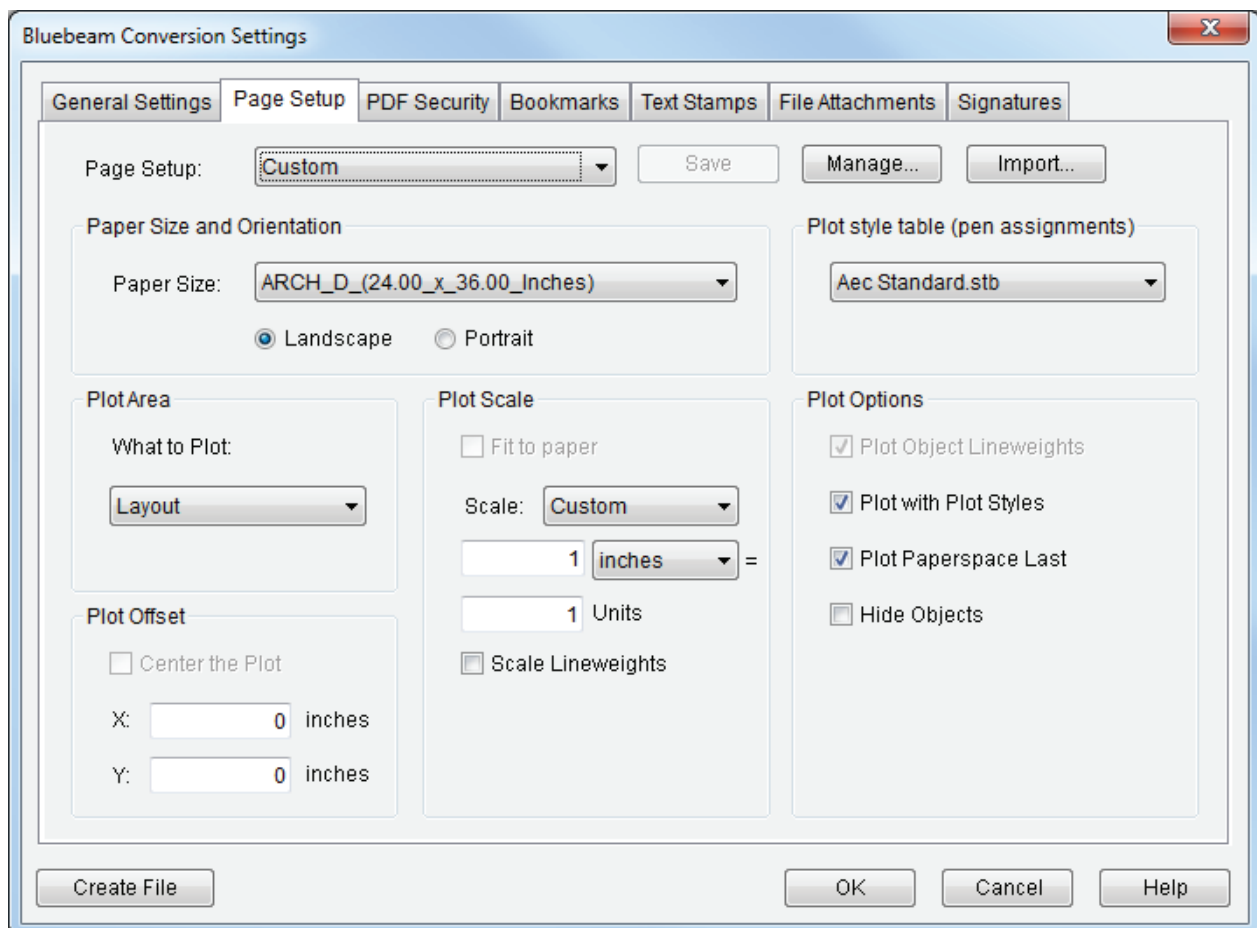
- General settings options for SolidWorks include:
 - Prompt for Filename
 - Show Results in Viewer
 - Delete Temporary Postscript Files
 - Use last saved folder
 - Select the data you want to transfer from SolidWorks files including:
 - Hyperlinks
 - File Properties
 - Determine Plot Quality by selecting:
 - Print or Draft line
 - Image DPI
 - Advanced settings including file format type, anti-aliasing, image compression, resolution, and line merge.
- What to Plot options from SolidWorks:
- Current Sheet
 - All Sheet Tabs
-

Page Settings Options

- Use default page setup or fully definable custom page settings
- Define custom page settings for PDF file from AutoCAD by changing:
 - Paper Size
 - Plot Area
 - Plot Scale
 - Set the Plot offset
 - Definition of Plot Style table (.ctb and .stb) to use. Option to turn on or off
- Define custom page settings for PDF file from Revit by changing:
 - Paper size
 - Zoom
 - Paper placement
 - Raster quality
 - Colors
 - Reorder selected sheets before converting to PDF
- Define custom page settings for PDF file for SolidWorks by changing:
 - Paper Size
 - Paper margins
 - Scale - Ability to use number of predefined, scaled to fit, or custom definition to define scale for drawing, parts or assemblies
 - Drawing color
 - Line weights
- Define Global page settings, which can be used every time you convert a DWG to PDF, or 10 other file formats
- Create and store an unlimited number of Global page settings
- Create Global settings and store them on a network drive where they can be accessed by all employees
- Supports most larger architectural and engineering paper sizes
- Support for custom page sizes
- Set default page size to A4 or Letter
- Can set prompting for filename
- Automatically use document or CAD drawing name as default
- Option to select new file name
- Uses PDF vector line quality settings
- Uses Raster image quality settings
- View results of PDF creation in reader after PDF translation completes
- Use the last saved PDF folder for the location to write PDF files

Page Settings Options (CONTD.)

- Choose options for plotting individual PDF files from AutoCAD:
 - Current Layout sheet (Option to include layout name to the PDF file)
 - All layout sheets (option to include model space in AutoCAD)
 - All model views in AutoCAD
- Choose options for plotting individual PDF files from Revit:
 - Current View/Sheet (with or without Child views)
 - All Sheets (with or without Child views)
 - Selected Views/Sheets
- Choose options for plotting individual PDF files from SolidWorks:
 - Current sheet
 - All sheet tabs
- Use Default MS Office page setup or fully definable custom page settings
- Choose options for plotting individual PDF files from MS Office:
 - All pages
 - Current page
 - Selected pages



Security Features

- Bluebeam security features allow you to:
 - Set a password to open files
 - Restrict printing or designate a printing quality parameter
 - Restrict ability to copy out text or graphics
 - Restrict creation of form fields and annotations
 - Restrict ability to fill out form fields
 - Restrict ability to manipulate or render pages
 - Restrict ability to create bookmarks
 - Save default passwords
 - Add digital signatures
- Apply security to a batch of PDF files in Revu

Bookmarking Features for SolidWorks

- Choose a bookmarking style based on:
 - Drawing name
 - Layout name
 - Drawing - layout name
- Plus add 4 types of secondary bookmarks that jump to a:
 - Specific PDF page
 - Snapshot view
 - Webpage
 - Specific file
- Control appearance of page numbers

Interactive Features

- Transfer hyperlinks from AutoCAD and SolidWorks drawings and MS Office documents (Word, Excel, PowerPoint) to PDF
- Transfer all file property data for easy file search and management
- Add Text stamps to PDF files one by one or add them in a batch from AutoCAD
- Option to select from a large group of predefined text stamps including:
 - Time stamp
 - Date
 - File Name
 - Path

Interactive Features (CONTD.)

- Customized text stamp capability:
 - Customize text stamp words
 - Select font, font size, font color, justification, and location on the page
- Create text stamps that can be stored on a network drive and shared by all employees
- Embed any number of compressed file attachments including
- Excel files, solid models, image files and other CAD files
- Bluebeam compresses embedded files for emailing and sharing
- Add Digital Signature fields and sign PDFs in Revu

E-mail Features for AutoCAD and SolidWorks

- Ability to simultaneously convert DWG and SolidWorks to PDF and e-mail files
- Fully integrated into AutoCAD, SolidWorks and MS Office for one-button transmission
- Saves E-mail settings for reuse
- Ability to compress e-mailed files
- Ability to send multiple converted files in a single e-mail
- Ability to specify different E-mail client or SMTP connection
- Ability to define e-mail templates that can be stored on a network drive and shared by all employees

Features for Large Enterprises

- Network Deployment - For companies that purchase multiple seats of Bluebeam desktop software, we offer a network deployment version of our software at no extra charge. This version integrates with network deployment technologies, such as Microsoft SMS and Novell ZENworks to install on multiple desktops across your network.
- Centralized Configuration - Bluebeam allows CAD managers or IT managers to centrally manage the following configurations:
 - Page size definitions
 - Text stamps
 - Global page settings
 - E-mail and FTP templates

PDF Viewing, Markup and Editing with Revu

- Revu Standard, CAD and eXtreme include Bluebeam Revu for PDF editing, markup, viewing, takeoffs, real-time collaboration and access features.

Miscellaneous

- Works in international versions of AutoCAD and SolidWorks (not localized text)
- Trial version does not include any annoying watermarks